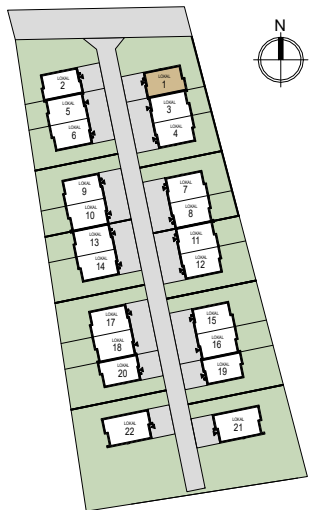


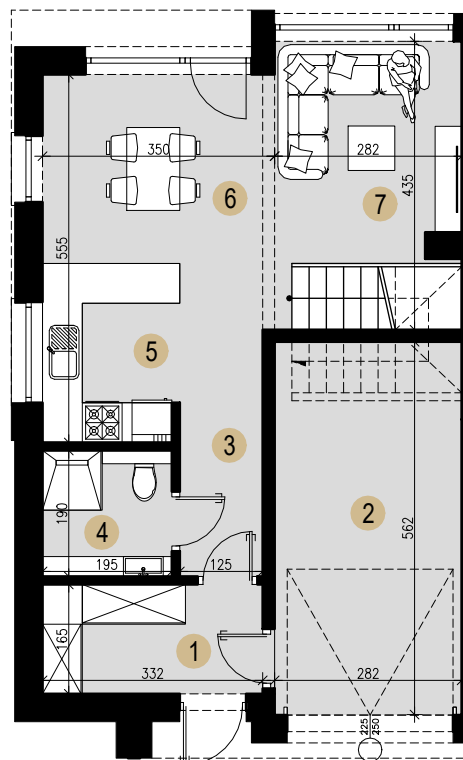
LOKAL 1

KULESZA

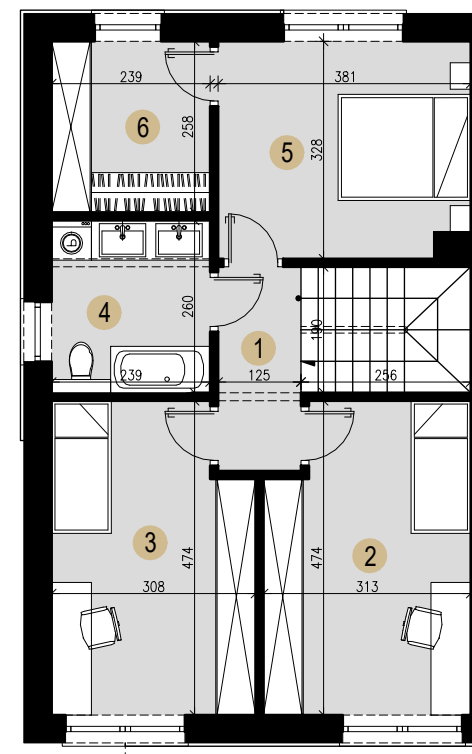
DEVELOPMENT



RZUT PARTERU



RZUT PIĘTRA



PARTER m²

| | | |
|-------|------------------|-------|
| 1 | wiatrołap | 5,28 |
| 2 | pom. gospodarcze | 14,61 |
| 3 | komunikacja | 6,14 |
| 4 | łazienka | 3,55 |
| 5 | kuchnia | 5,45 |
| 6 | jadalnia | 9,91 |
| 7 | salon | 9,02 |
| razem | | 53,95 |

PIĘTRO m²

| | | |
|---------------------|-------------|---------------|
| 1 | komunikacja | 3,72 |
| 2 | pokój 1 | 13,69 |
| 3 | pokój 2 | 13,46 |
| 4 | łazienka | 6,02 |
| 5 | sypialnia | 11,99 |
| 6 | garderoba | 5,97 |
| razem | | 54,84 |
| POWIERZCHNIA | | 108,79 |
| (parter + piętro) | | |

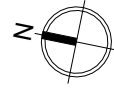
KULESZA
DEVELOPMENT

BIURO SPRZEDAŻY MIESZKAŃ

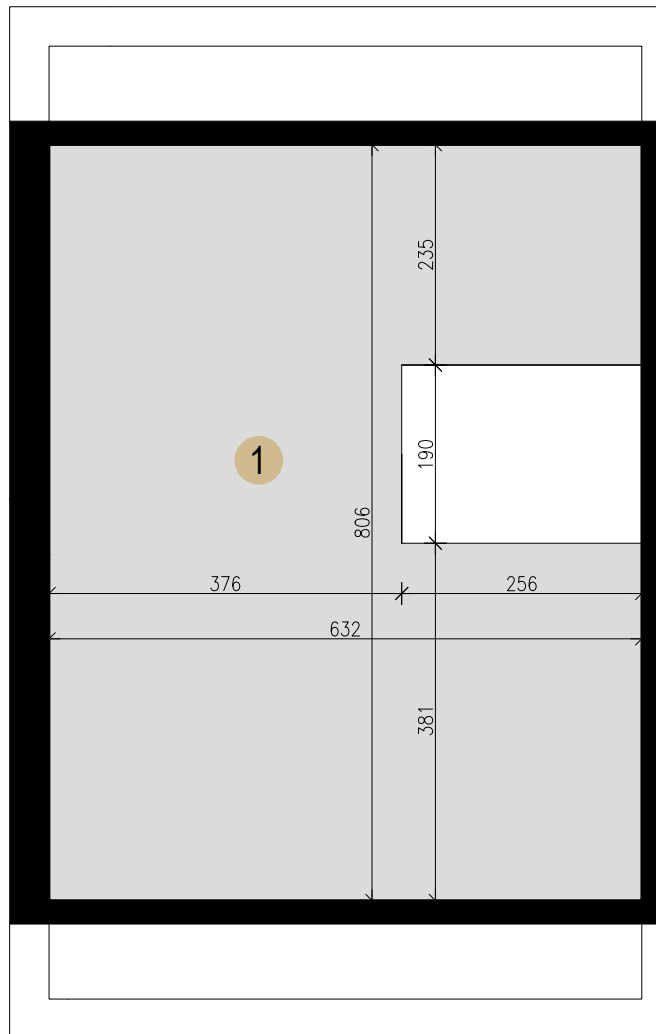
ul. Kosseckiego 1 lok. U2, Zambrów
tel.: +48 570 820 854

email: kulesza.development@gmail.com
www.kuleszadevelopment.pl

LOKAL 1



RZUT PODDASZA



| | PODDASZE | m ² |
|---|-------------------------|----------------|
| 1 | poddasze nieużytkowe | 46,07 |